



Barracuda SSL VPN

Comprehensive, clientless secure remote access

The Barracuda SSL VPN is an integrated hardware and software solution enabling secure, clientless remote access to internal network resources from any Web browser. The Barracuda SSL VPN provides complete control over file systems and Web-based applications requiring external access, while integrating with third-party authentication mechanisms to provide granular access controls.

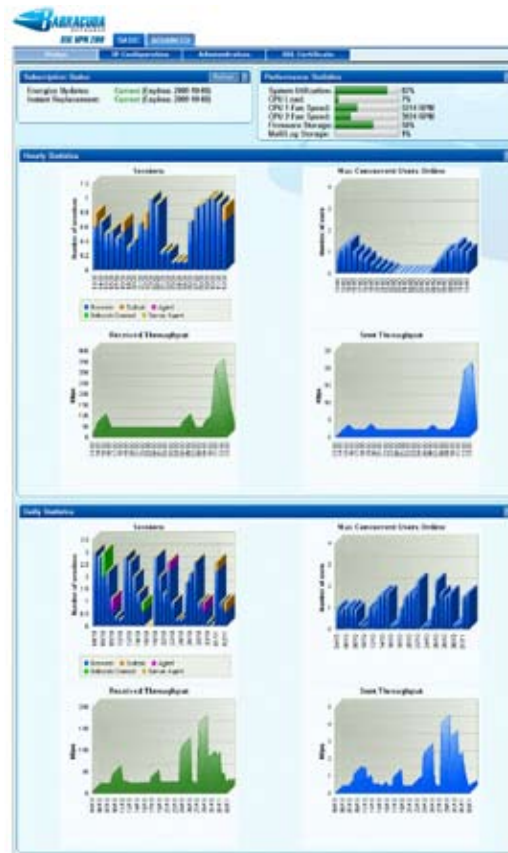
Comprehensive Security and Easy-to-Use

The Barracuda SSL VPN installs in a matter of minutes to enable complete control over the resources designated for external access, such as internal Web applications, file systems, and other applications. From any Web browser, users can take advantage of a reverse proxy to access internal Web applications or access network file shares. Richer support for SSL tunneling is enabled through the Barracuda SSL VPN Agent, a lightweight Java client that supports common remote applications, including Remote Desktop Services, Citrix XenApp, VNC, NX, SSH, and Telnet. For complete network layer access, the Barracuda SSL VPN includes the Barracuda Network Connector, an installable VPN client for TCP or UDP connectivity, for SSL access to legacy client/server applications during a VPN session.

With robust security and auditing facilities, administrators can define custom policies to govern resource access to particular users or groups while tracking user activity. For added security, files uploaded during a VPN session to network file shares or internal Web sites are scanned for viruses and other malware to prevent infections of critical network resources.

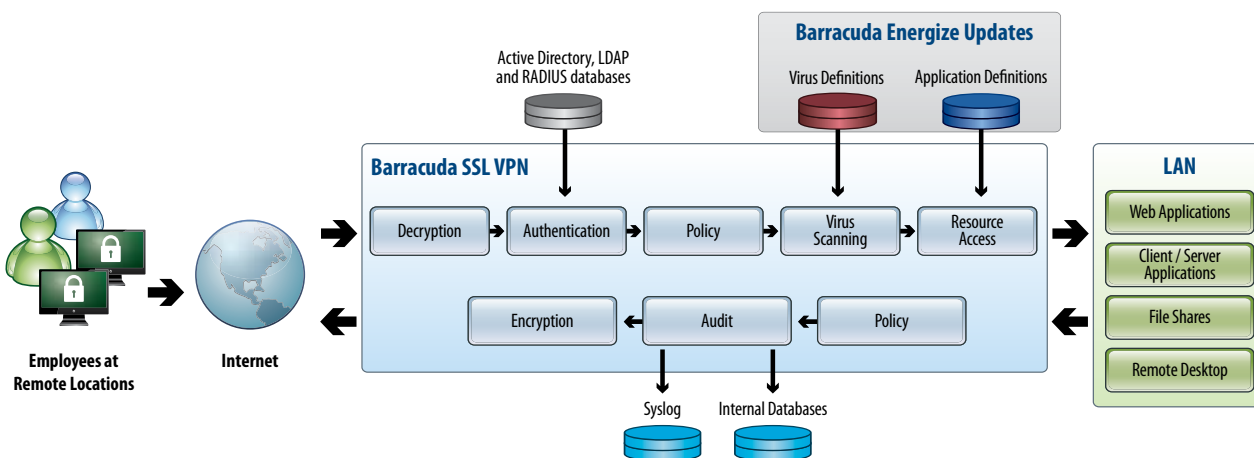
Virtually Maintenance-Free

To minimize ongoing administration associated with security, the Barracuda SSL VPN automatically receives hourly Energize Updates for the latest virus, security, and application definitions. The Barracuda SSL VPN leverages existing third-party authentication databases to centralize the provisioning of new users for remote network access.



The Barracuda SSL VPN monitors sessions, concurrent users, and throughput on an hourly and daily basis.

Barracuda SSL VPN Architecture



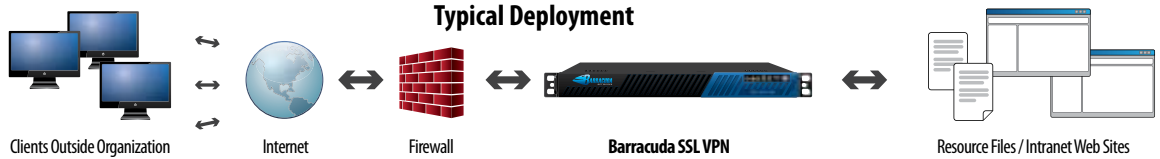
BARRACUDA SSL VPN

MODEL
180
280
380
480
680



BARRACUDA SSL VPN

MODEL
180
280
380
480
680



TECHNICAL SPECIFICATIONS

Key Features

SECURITY FEATURES

- Supports Active Directory, LDAP, NIS and built-in user databases
- Policy-based rights management
- Multi layered authentication schemes
- RADIUS, PIN, and public key authentication
- One-time password authentication via email or SMS
- Supports SecurID, VASCO, Safeword and CryptoCard authentication tokens
- Supports Aladdin eToken, SafeNet iKey and other PKI USB devices
- Client access controls based on operating system and Web browser version
- Automatic cache cleaning on logout
- Web application URL masking
- Virtual keyboard

VPN FEATURES

- Intranet Web site forwarding
- Network file system browsing
- Web Application Single sign-on
- Remote Desktop Single sign-on

VPN FEATURES (cont.)

- Barracuda SSL VPN Agent: Java agent for clientless deployment
- Barracuda Network Connector: Installable VPN client for IP connectivity
- Citrix XenApp (ICA), VNC, NX, Telnet, SSH, and RDP applications
- Local Windows Explorer drive mapping
- Site-to-site connectivity
- Configurable SSL tunnels
- Multiple user logon realms

VIRUS SCANNING

- Virus, spyware and malware scanning
- Decompression of archives
- File type blocking

AUDITING & REPORTING CAPABILITIES

- Track file, Web and network access
- Reports in PDF, CSV and text formats
- Granular controls for access and policy
- Health monitoring
- Network utilization and appliance load statistics

Hardware Features

POWER REQUIREMENTS

- AC input voltage 100-240 volts
- Frequency 50/60 Hz

CONNECTORS

- Standard VGA
- PS/2 keyboard/mouse
- Ethernet (see chart below)
- Serial port (DB-9)

Support Options

ENERGIZE UPDATES SUBSCRIPTION

- Standard technical support
- Hourly virus definition updates
- Application definitions
- Security updates
- Firmware updates

INSTANT REPLACEMENT SERVICE

- Replacement unit shipped next business day
- 24x7 technical support

MODEL COMPARISON	MODEL 180	MODEL 280	MODEL 380	MODEL 480	MODEL 680
CAPACITY*					
Maximum Concurrent Users	15	25	50	100	500
HARDWARE					
Rackmount Chassis	1U Mini	1U Mini	1U Mini	1U Mini	1U Fullsize
Dimensions (in.)	16.8 x 1.7 x 9.1	16.8 x 1.7 x 14	16.8 x 1.7 x 14	16.8 x 1.7 x 14	16.8 x 1.7 x 22.6
Dimensions (cm.)	42.7 x 4.3 x 23.1	42.7 x 4.3 x 35.6	42.7 x 4.3 x 35.6	42.7 x 4.3 x 35.6	42.7 x 4.3 x 57.4
Weight (lbs. / kg.)	8 / 3.6	12 / 5.4	12 / 5.4	12 / 5.4	26 / 11.8
Ethernet	1 x 10/100	1 x 10/100	1 x 10/100	1 x 10/100	2x Gigabit
AC Input Current (Amps)	1.0	1.0	1.2	1.4	1.8
Redundant Disk Array (RAID)				✓	✓
ECC Memory					✓
FEATURES					
SSL Tunneling	✓	✓	✓	✓	✓
Barracuda Network Connector	✓	✓	✓	✓	✓
Intranet Web Forwarding	✓	✓	✓	✓	✓
Network File Access	✓	✓	✓	✓	✓
Windows Explorer Mapped Drives	✓	✓	✓	✓	✓
Citrix XenApp/VNC/NX/Telnet/SSH/RDP Applications	✓	✓	✓	✓	✓
Remote Desktop Single sign-on	✓	✓	✓	✓	✓
Anti-Virus	✓	✓	✓	✓	✓
Client Access Controls	✓	✓	✓	✓	✓
Active Directory/LDAP Integration	✓	✓	✓	✓	✓
Layered Authentication Schemes	✓	✓	✓	✓	✓
Multiple User Realms			✓	✓	✓
Barracuda SSL VPN Server Agent			✓	✓	✓
Hardware Token Support			✓	✓	✓
RADIUS Authentication			✓	✓	✓
SNMP / API				✓	✓
Syslog Logging				✓	✓

US 12.0

Specifications subject to change without notice.

*Capacity depends on environment and selected options.